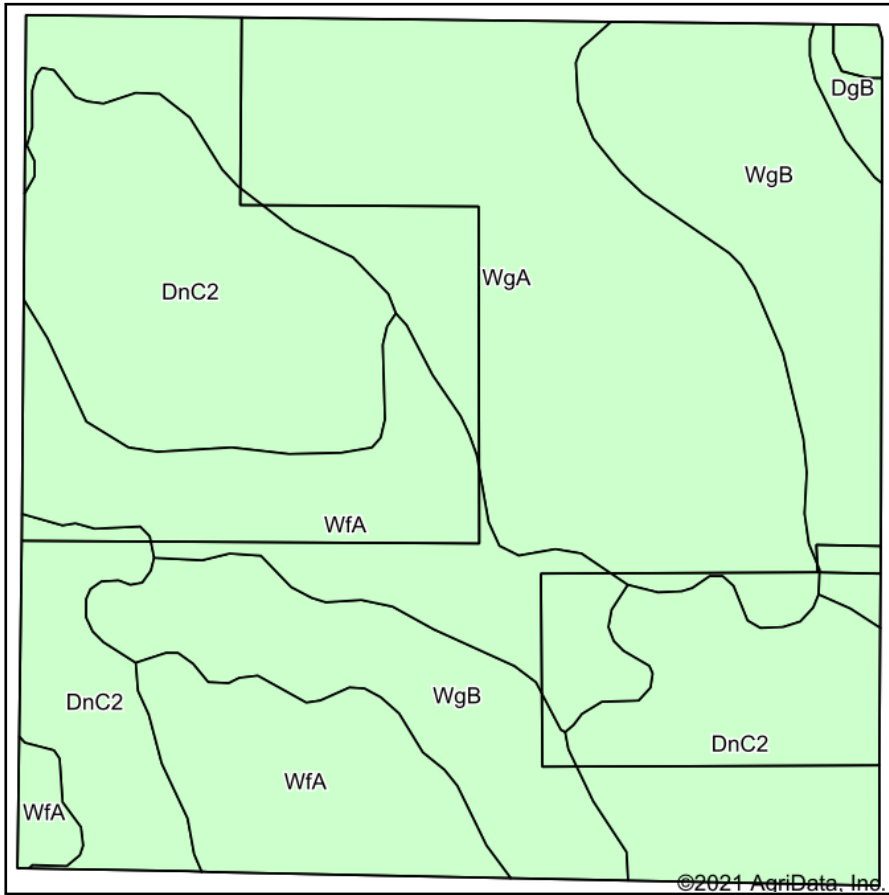
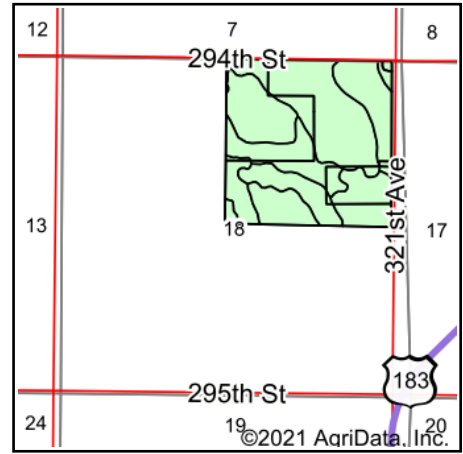


# Soils Map



Soils data provided by USDA and NRCS.



State: **South Dakota**  
 County: **Tripp**  
 Location: **18-96N-75W**  
 Township: **Stewart**  
 Acres: **156.26**  
 Date: **8/31/2021**



Area Symbol: SD123, Soil Area Version: 21

Code	Soil Description	Acres	Percent of field	Non-Irr Class *c	Irr Class *c	Productivity Index	Alfalfa hay	Alfalfa hay Irrigated	Cool season grasses	Corn	Corn Irrigated	Grain sorghum Irrigated	Oats	Tall wheatgrass	*n NCCPI Soybeans
WgA	Wewela fine sandy loam, 0 to 3 percent slopes	46.43	29.7%	IIIe	IIIe	43									29
DnC2	Dunday loamy fine sand, 3 to 9 percent slopes, eroded	45.03	28.8%	VIe	IVe	34		3			90	70			24
WfA	Wewela loamy fine sand, 0 to 4 percent slopes	31.87	20.4%	IVe	IVe	40	1.7		2.5	28			36		25
WgB	Wewela fine sandy loam, 3 to 6 percent slopes	31.27	20.0%	IVe	IVe	39									29
DgB	Doger loamy fine sand, 0 to 6 percent slopes	1.66	1.1%	IVe		32	1.5			25			30	2.5	29
<b>Weighted Average</b>						<b>38.9</b>	<b>0.4</b>	<b>0.9</b>	<b>0.5</b>	<b>6</b>	<b>25.9</b>	<b>20.2</b>	<b>7.7</b>	<b>*-</b>	<b>*n 26.7</b>

\*n: The aggregation method is "Weighted Average using all components"

\*c: Using Capabilities Class Dominant Condition Aggregation Method

Soils data provided by USDA and NRCS.